

CAMPUS STIC



CONSEIL GÉNÉRAL
ALPES-MARITIMES

Maitre d'ouvrage

CONSEIL GENERAL DES ALPES MARITIMES

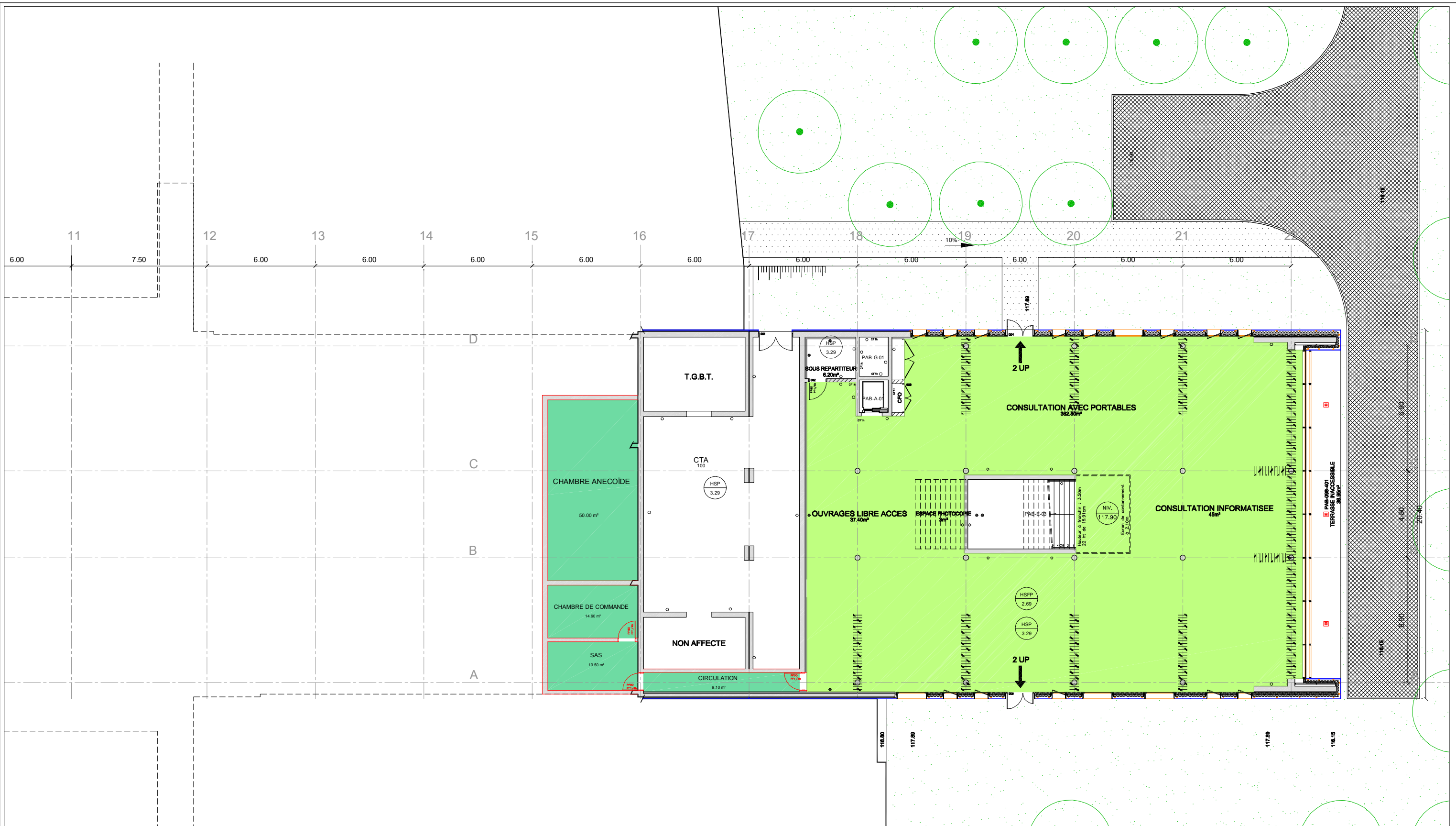
DIRECTION DE LA CONSTRUCTION ET DU PATRIMOINE
Service études et programmation-bâtiment

BP n°3007 - 06201 NICE cedex 3
Tél: 04.97.18.64.75 - Fax: 04.97.18.70.50

**FAISABILITE D'IMPLANTATION DU L.E.A.T. DANS LE
BATIMENT PÔLE ACCUEIL RECHERCHE**

DCP/SEPB

Mai 2010



CAMPUS STIC

SOPHIA ANTIPOLIS
Route des Lucioles 06560 Sophia-Antipolis

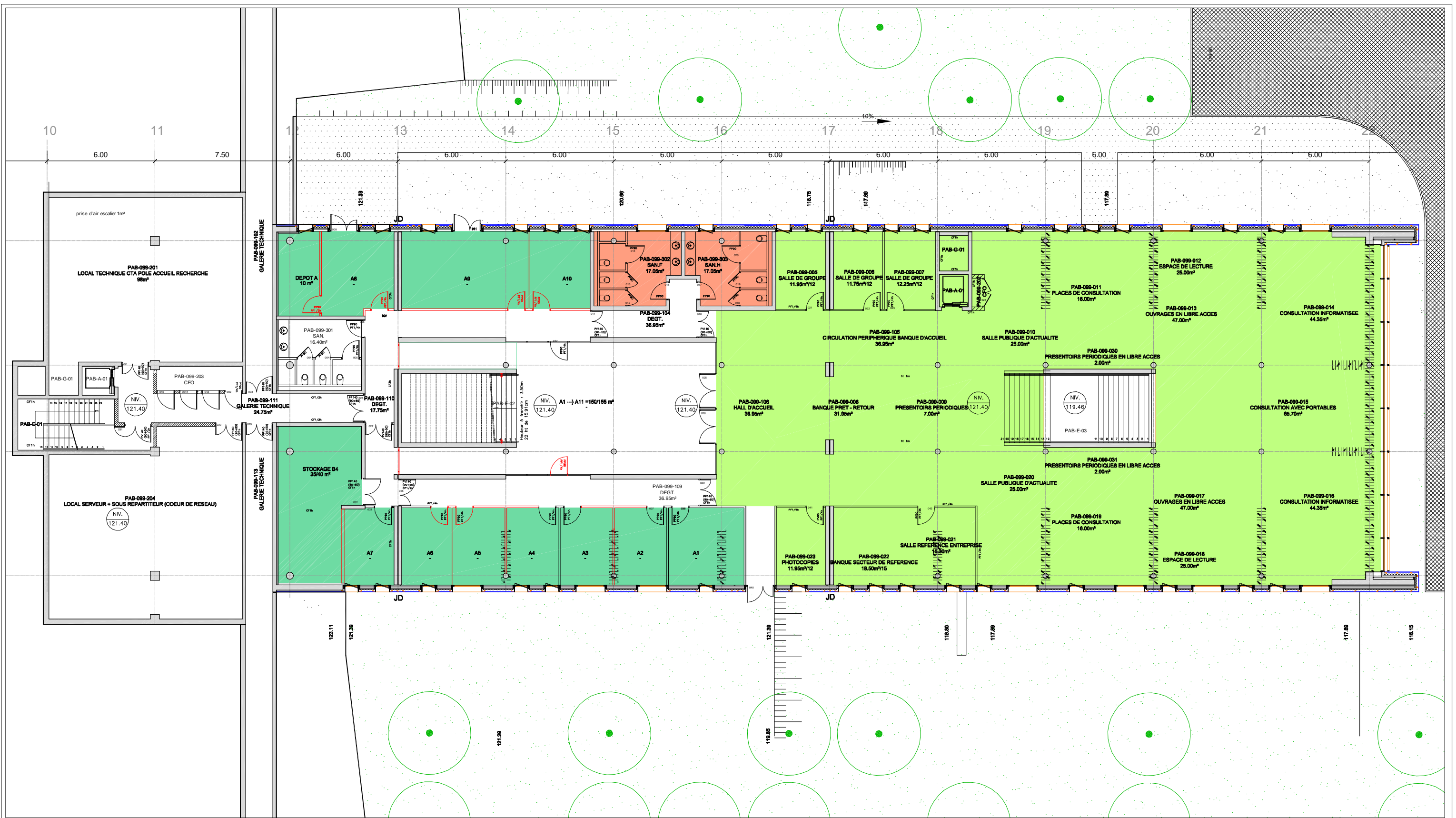
ARC-MAR-PAB-102P

FAISABILITE LEAT PAB Niveau 098

Date: Mail 2010
Echelle: 1/200

LEGENDE

	LOCAUX LEAT 70,20 m²
	LOCAUX UNSA 490,25 m²



CAMPUS STIC

SOPHIA ANTIPOLIS
Route des Lucioles 06560 Sophia-Antipolis

ARC-MAR-PAB-099P

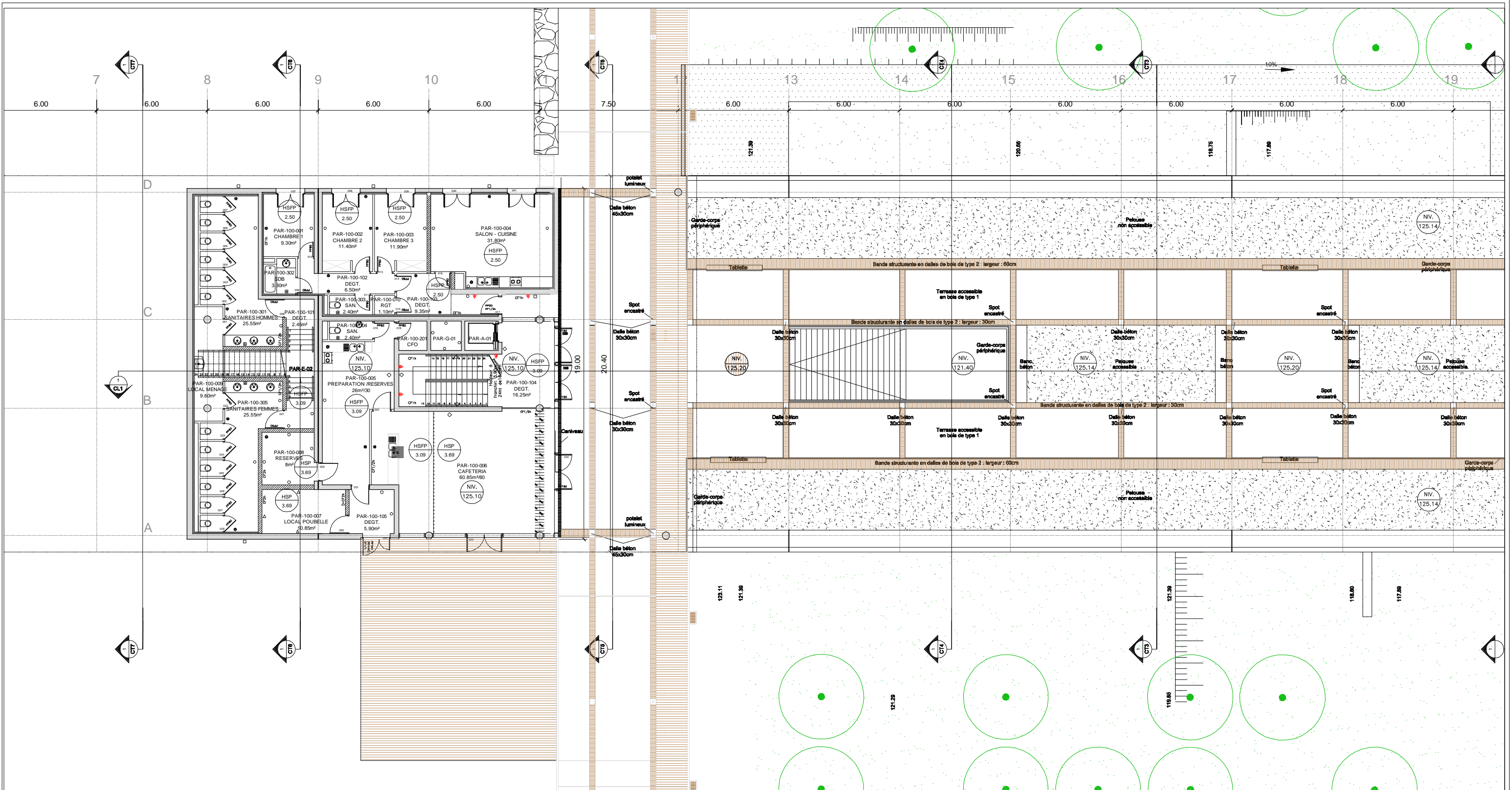
FAISABILITE LEAT PAB Niveau 99

Date: Mai 2010
Echelle: 1/200

BARRETTE_BASSE

LEGENDE

	LOCAUX LEAT 204,10 m²
	LOCAUX UNSA 658,10 m²
	LOCAUX COMMUNS 37,35 m²



CAMPUS STIC

SOPHIA ANTIPOLIS

Route des Lucioles 06560 Sophia-Antipolis

ARC-MAR-PAB-100P

FAISABILITE LEAT
PAB Niveau 100

Date: Mai 2010

Echelle: 1/200

PLAN_ARCHI_BIBLIOTHEQUE

N.F.+125.10

BARRETTE_HAUTE

CAMPUS STIC

SOPHIA ANTIPOLIS

Route des Lucioles 06560 Sophia-Antipolis

ARC-MAR-PAB-101P

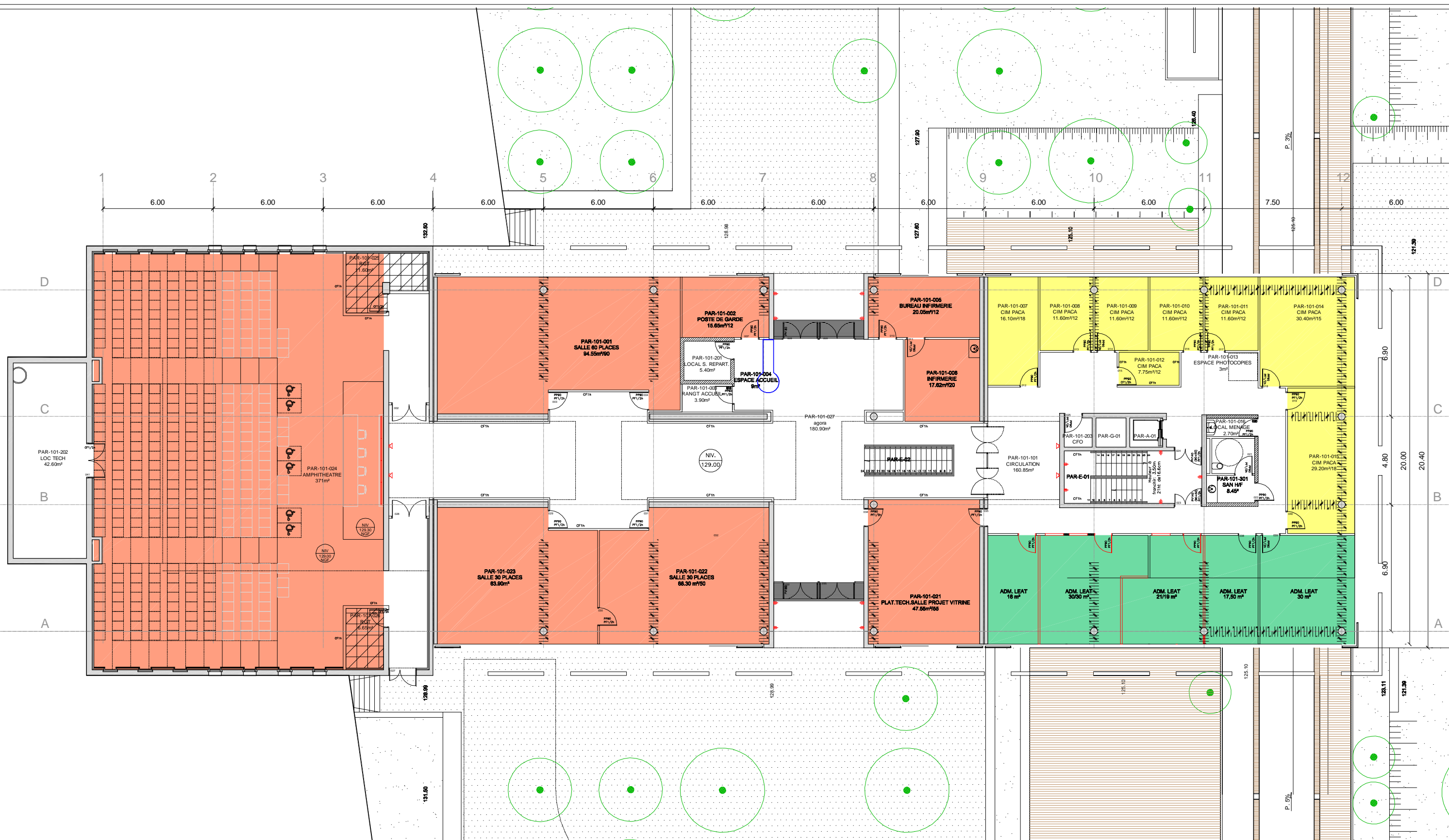
FAISABILITE LEAT PAB Niveau 101

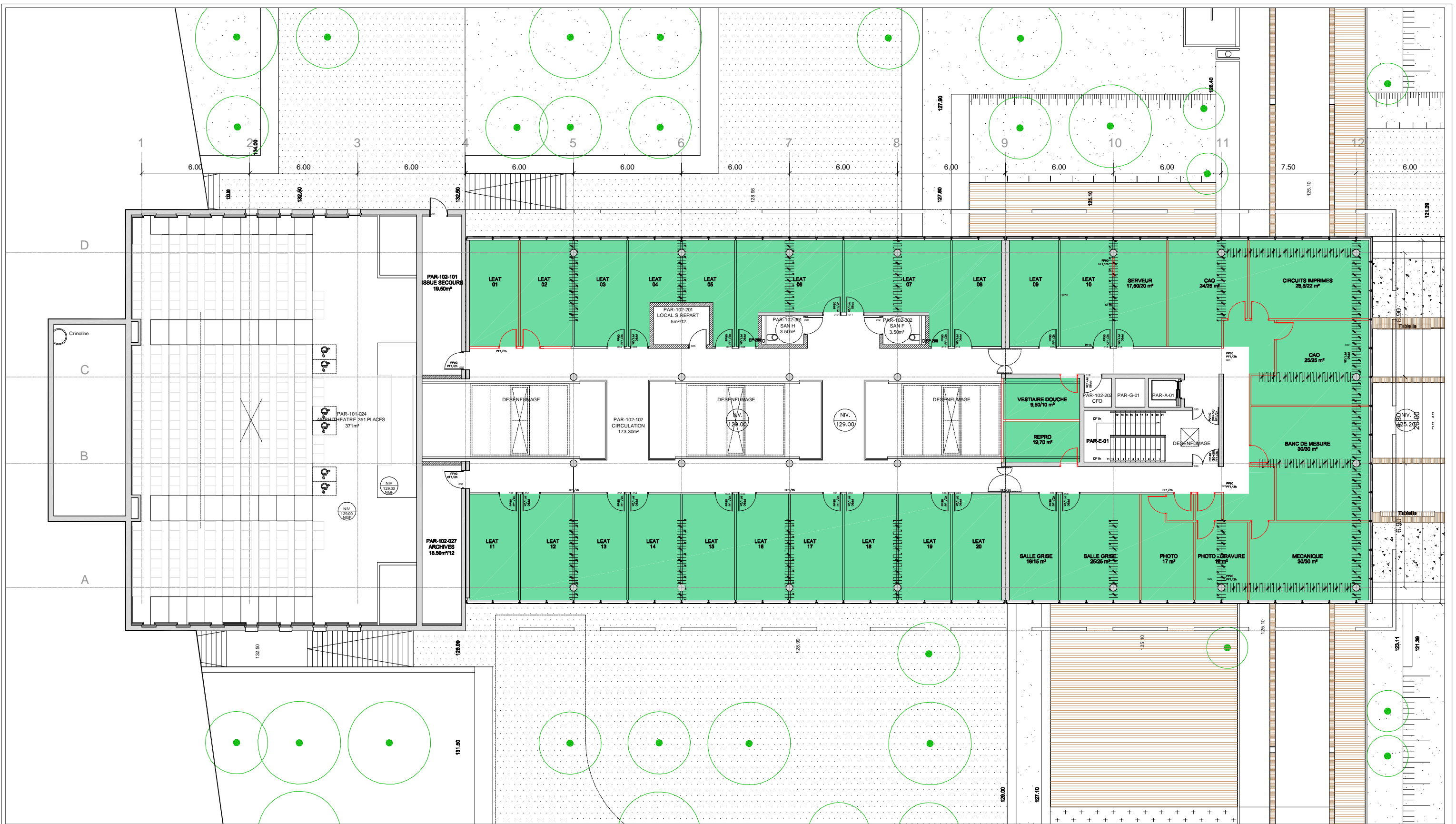
Date: Mai 2010
Echelle: 1/200

PLAN_ARCHI_BIBLIOTHEQUE N.F.+129.00 BARRETTE_HAUTE

LEGENDE

- LOCAUX LEAT
118,00 m²
- LOCAUX COMMUNS
678,35 m²
- LOCAUX CIM PACA
130,70 m²





CAMPUS STIC

SOPHIA ANTIPOLIS
Route des Lucioles 06560 Sophia-Antipolis

ARC-MAR-PAB-102P

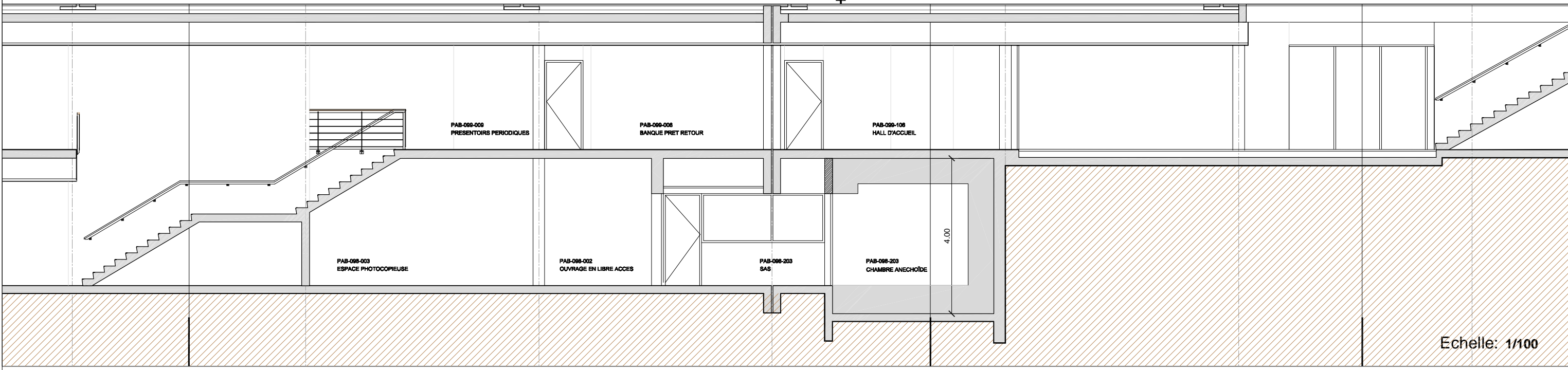
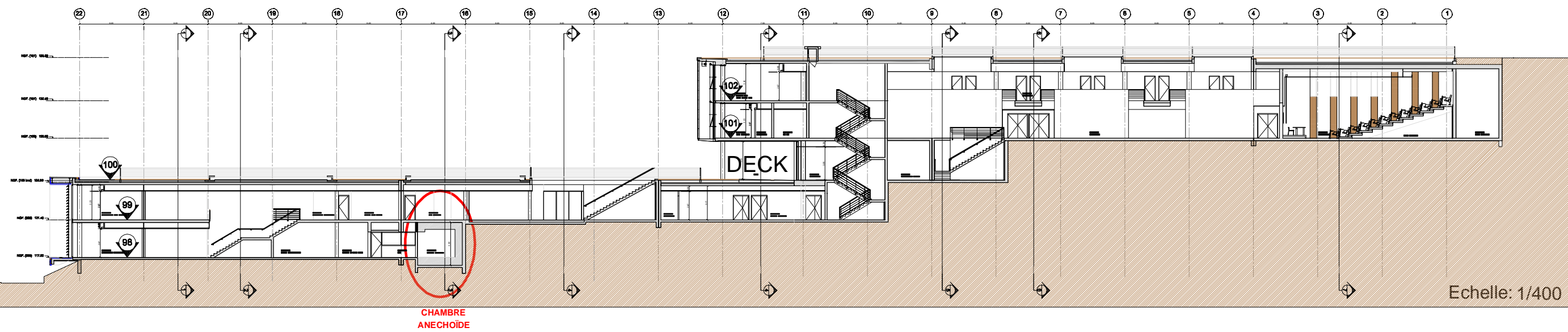
FAISABILITE LEAT PAB Niveau 102

Date: Mai 2010
Echelle: 1/200

BARRETTE_HAUTE

LEGENDE

- LOCAUX LEAT
612,50 m²
- LOCAUX COMMUNS
00,00 m²



CAMPUS STIC

SOPHIA ANTIPOLIS
Route des Lucioles 06560 Sophia-Antipolis

ARC-MAR-PAB-CL

FAISABILITE LEAT

PAB COUPE LONGITUDINALE

Date: Mai 2010
Echelle: -

IMPLANTATION DE LA CHAMBRE ANECHOÏDE AU NIVEAU 98